



HORNER
AUTOMATION GROUP



**PLATFORM FOR
DATA COLLECTION,
CLOUD-BASED VISUALIZATION,
AND REMOTE CONNECTIVITY**



**PLATFORM FOR DATA COLLECTION,
CLOUD-BASED VISUALIZATION,
AND REMOTE CONNECTIVITY**

DATA COLLECTION and Advanced Analytics Using AI and ML

AI (Artificial Intelligence) and ML (Machine Learning) analytics on the OCS360 platform enable sophisticated data analysis and decision-making.

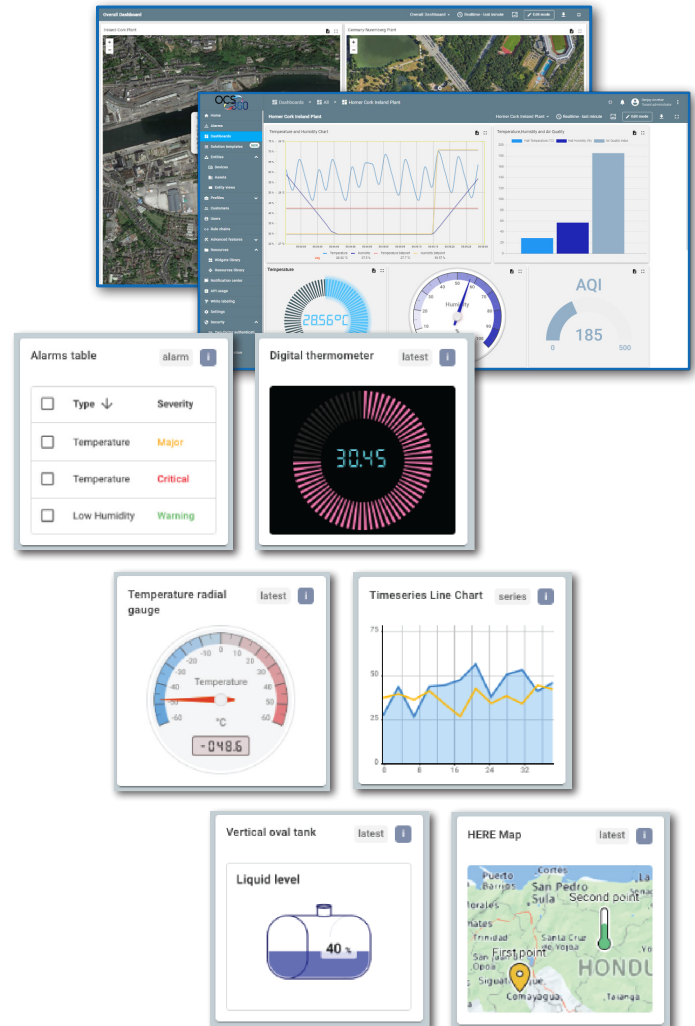
Features which can be supported:

- Predictive Maintenance
- Anomaly Detection
- Demand Forecasting
- Optimization of Operations
- Energy Management
- Supply Chain Optimization
- Remote Monitoring and Diagnostics
- Asset Performance Management
- Customer-Specific AI Models

**Available for Canvas OCS, XL Prime and Micro OCS Model e only*

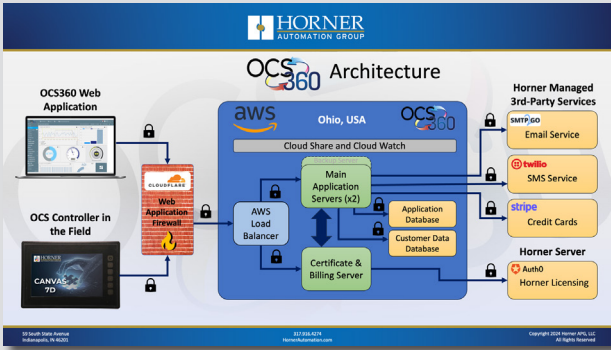
CLOUD-BASED VISUALIZATION

OCS360 dashboards offer an intuitive drag-and-drop interface with a diverse widget library, allowing real-time data visualization of data received from OCS devices using MQTT protocol. Users can customize layouts, display device values and attributes. It also allows users to integrate advanced rule engine functionalities for rule-driven actions. With responsive design, sharing options and interactive widget features, these dashboards empower users to create dynamic visualizations and analyze historical data.



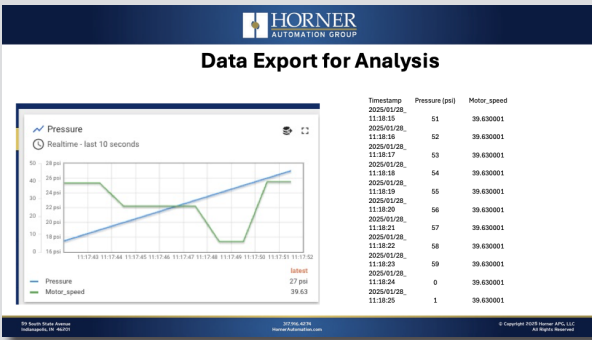
SECURE & EFFICIENT DATA COLLECTION

OCS360 leverages TLS 1.3, the latest in encryption technology, to provide fast, secure, and reliable data collection and visualization. With stronger encryption, Perfect Forward Secrecy, and an optimized handshake process, TLS 1.3 ensures that your industrial data remains protected while improving connection speed and efficiency. By eliminating outdated security protocols and reducing latency, OCS360 delivers a seamless, secure, and future-proof cloud-based solution.



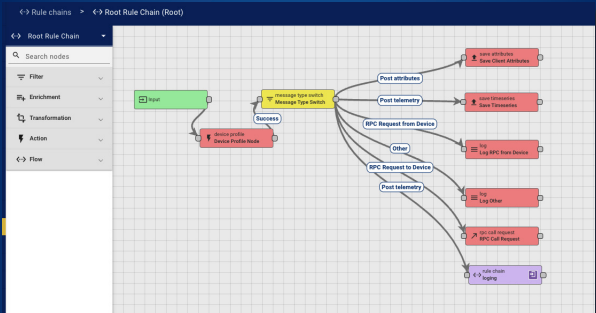
DATA EXPORT

Easily access and share important information by exporting your data into .csv format. Whether for reports, analysis, or record-keeping, exporting helps you organize and use your data in a way that fits your business needs. It also ensures you have backups and the flexibility to work with your information across different platforms.



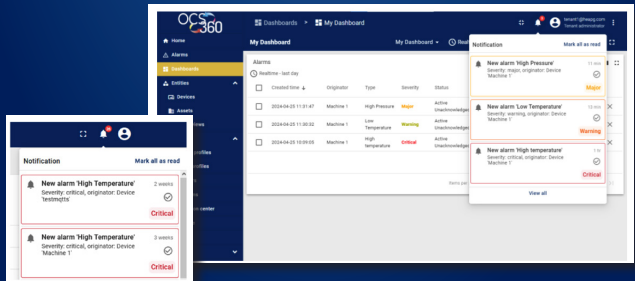
RULE ENGINE

Rule Engine in the OCS360 platform is a highly customizable and configurable system for complex event processing. With Rule Engine, users are able to filter, enrich and transform incoming messages originated by the devices and related assets. Users are also able to trigger various actions, for example, notifications or communication with external systems.



ALARM MONITORING

Ensure optimal system performance with OCS360's advanced alarming features. Our platform enables real-time alarm creation and management, helping you proactively address potential issues before they escalate. With configurable alarm types, severity levels, and notification options via email and SMS - OCS360 keeps you informed and in control. OCS360 can also monitor device status, assign alarms to team members, and track resolution progress through an intuitive dashboard.

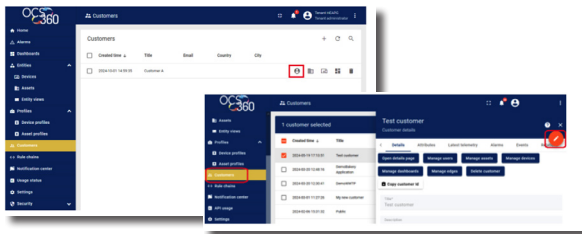


HORNER AUTOMATION AND OCS360

USER MANAGEMENT

With advanced User Management, OCS360 allows administrators to easily create and configure additional administrators (multi-tenant) and customers, and to assign devices and manage dashboards—from a centralized interface. Whether you're handling multiple users, internal customers, or millions of connected assets, OCS360 ensures efficient control and accessibility.

- Seamless Customer Creation & Management - Easily add, edit, or remove customers and users, ensuring secure access and role-based control.
- Customizable Dashboards & Alerts - Assign home dashboards and real-time alarms to stay ahead of critical system changes.



REMOTE CONNECTIVITY

The OCS360's remote connectivity securely facilitates the connection of Cscape for remote troubleshooting, program and firmware upgrades and WebMI pages seamlessly over the cloud. Remote connectivity utilizes end-to-end encryption, ensuring that data transferred between devices, servers, and laptops (PCs) is fully secure. Additionally, only certified devices have access to connect to the server.

Key functionalities include:

- Real-Time Monitoring w/o Device's Static IP Requirement
- HMI (Human-Machine Interface) Access
- Alarm and Event Monitoring
- Trending and Recipe Control
- Remote Programming and Debugging
- File Transfer and Firmware Upgrades



SUBSCRIPTION PACKAGES

Devices	Per Device
Data/Min.	250
Dashboards	Unlimited
Sessions	5
Users	250
Control Data	Yes
Data Retention	2 Years
SMS/Mo.	100*
Emails	Unlimited
Reports	Yes
Remote Access	Future Release
Price	\$250/Year
*If exceed limit, there is a surcharge	

Silver Package

Devices	Per Device
Data/Min.	500
Dashboards	Unlimited
Sessions	10
Users	500
Control Data	Yes
Data Retention	5 Years
SMS/Mo.	300*
Emails	Unlimited
Reports	Yes
Remote Access	Future Release
Price	\$500/Year
*If exceed limit, there is a surcharge	

Gold Package

Devices	Per Device
Data/Min.	1000
Dashboards	Unlimited
Sessions	25
Users	Unlimited
Control Data	Yes
Data Retention	5 Years
SMS/Mo.	1000*
Emails	Unlimited
Reports	Yes
Remote Access	Future Release
Price	\$800/Year
*If exceed limit, there is a surcharge	

Platinum Package

Please call the factory for Custom Packages



GLOBAL HEADQUARTERS

59 South State Avenue
Indianapolis, Indiana 46201
P 317-916-4274
F 317-639-4279
TF 877-665-5666
www.hornerautomation.com
sales@heapg.com

INTERNATIONAL OPERATIONS

HORNER EUROPE

Horner Ireland Limited, Unit 1, Centrepont, Centrepark Road, Cork, Ireland
P +353-21-4321266
F +353-21-4321826
info@horner-apg.com
www.hornerautomation.eu

HORNER CANADA

916 42 Avenue SE #120, Calgary, Alberta T2G 1Z2
P (403) 444-0928
F (403) 265-0966
info@hornercanada.com
www.hornerautomation.com

HORNER INDIA

Vaishnavi, No. 3, Domlur 2nd Stage, 3rd Phase, Domlur Main Rd.
Bangalore 560071, Karnataka, India
P +91-80-41263460 / 61 / 62
F +91-80-41263464
info@hornerautomation.in

